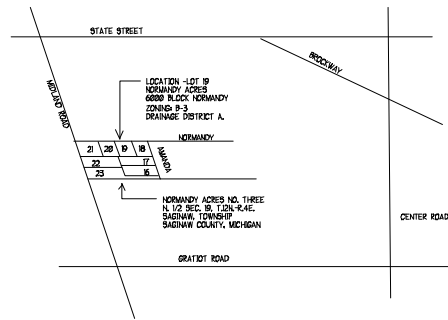


LANDSCAPE PLANTING SYMBOLS	
	DECIDUOUS TREE
	SHRUB
A	BURNING BUSH SHRUB
B	LILAC DECIDUOUS SHRUB
C	JANPER EVERGREEN SHRUB
D	YEW EVERGREEN SHRUB
E	MAPLE DECIDUOUS TREE



NEW BUILDING NOTES

PROPOSED SQUARE FOOTAGE:

FIRST FLOOR: 60' x 32' @ 1,920 SQ. FT. USE GROUP: B
 BASEMENT: 60' x 32' @ 1,920 SQ. FT. USE GROUP: S-1

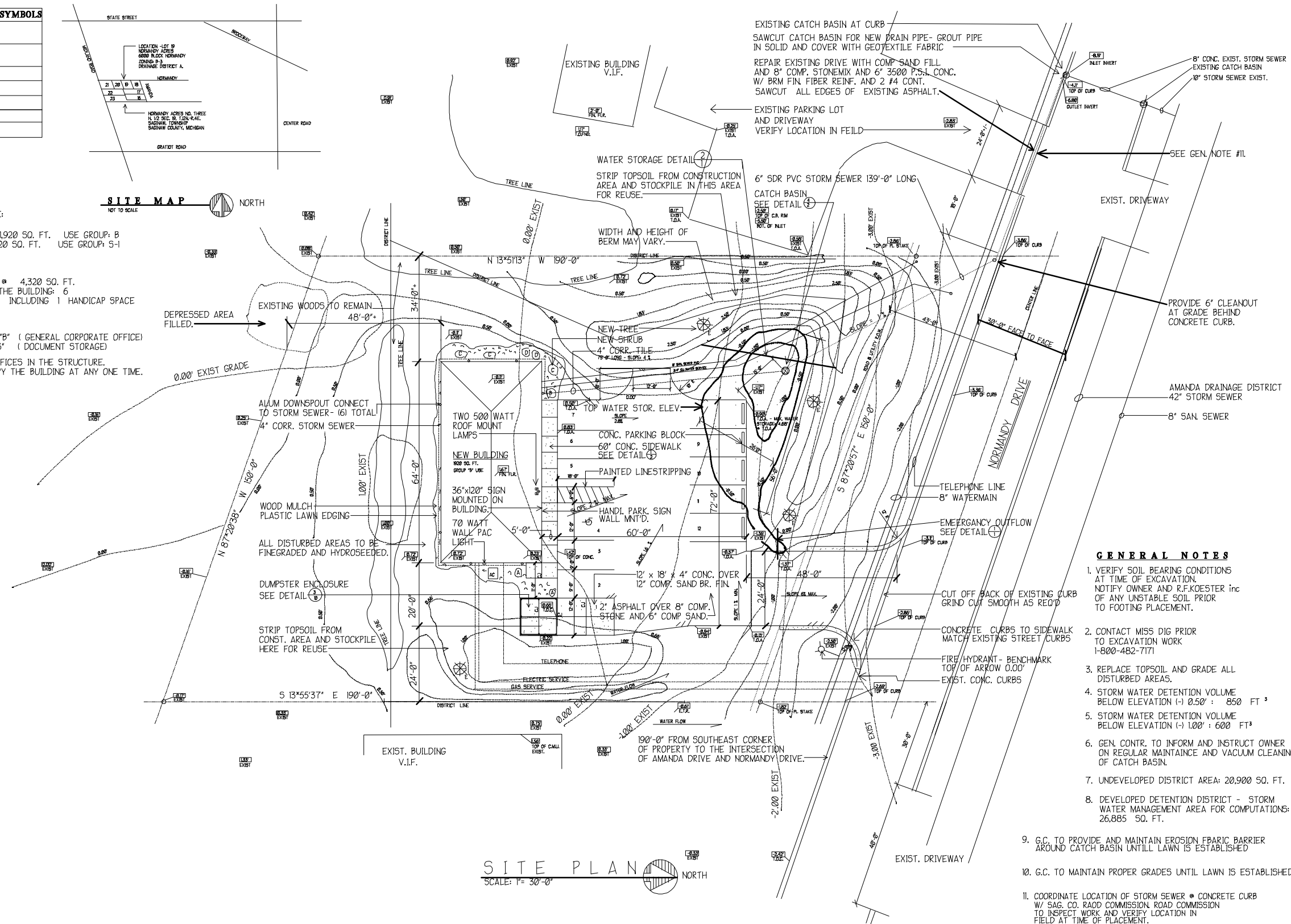
PARKING:

OVERALL SIZE: 60' x 72' @ 4,320 SQ. FT.
 NUMBER OF EMPLOYEES IN THE BUILDING: 6
 TOTAL PARKING SPACES: 12 INCLUDING 1 HANDICAP SPACE

PROPOSED USE:

FIRST FLOOR: USE GROUP "B" (GENERAL CORPORATE OFFICE)
 BASEMENT: USE GROUP "S" (DOCUMENT STORAGE)

THERE ARE TO BE FIVE OFFICES IN THE STRUCTURE.
 SIX EMPLOYEES MAY OCCUPY THE BUILDING AT ANY ONE TIME.



GENERAL NOTES

1. VERIFY SOIL BEARING CONDITIONS AT TIME OF EXCAVATION. NOTIFY OWNER AND R.F.KOESTER inc OF ANY UNSTABLE SOIL PRIOR TO FOOTING PLACEMENT.
2. CONTACT MISS DIG PRIOR TO EXCAVATION WORK 1-800-482-7171
3. REPLACE TOPSOIL AND GRADE ALL DISTURBED AREAS.
4. STORM WATER DETENTION VOLUME BELOW ELEVATION (-) 0.50' : 850 FT³
5. STORM WATER DETENTION VOLUME BELOW ELEVATION (-) 1.00' : 600 FT³
6. GEN. CONTR. TO INFORM AND INSTRUCT OWNER ON REGULAR MAINTAINANCE AND VACUUM CLEANING OF CATCH BASIN.
7. UNDEVELOPED DISTRICT AREA: 20,900 SQ. FT.
8. DEVELOPED DETENTION DISTRICT - STORM WATER MANAGEMENT AREA FOR COMPUTATIONS: 26,885 SQ. FT.
9. G.C. TO PROVIDE AND MAINTAIN EROSION FABRIC BARRIER AROUND CATCH BASIN UNTILL LAWN IS ESTABLISHED
10. G.C. TO MAINTAIN PROPER GRADES UNTIL LAWN IS ESTABLISHED.
11. COORDINATE LOCATION OF STORM SEWER @ CONCRETE CURB W/ SAG. CO. ROAD COMMISSION ROAD COMMISSION TO INSPECT WORK AND VERIFY LOCATION IN FIELD AT TIME OF PLACEMENT.

SEAL

R. F. KOESTER
 INC.
 BUILDING DESIGNER
 GENERAL CONTRACTOR
 989 695-4794
 Residential - Commercial
 3830 North Fordney Road Hemlock, Michigan 48626

NEW HOME:
 Paxson Oil
 3630 N. Fordney Rd
 Hemlock, MI 48626

DATE:	06/29/00
DRAWN BY:	
REVISIONS:	
	R.F. KOESTER inc.
PROJECT NUMBER:	Paxson Oil
SHEET:	

COPYRIGHT 2000